

# Toys in the past—Knowledge Organiser

## Key Facts

Across all periods of history children have always played with toys.

The first jigsaw puzzle was invented in 1767.

The first teddy bear were made in 1902 in America. They were named after American president Theodore Roosevelt.

Lego was invented in 1932 by Ole Kirk Christiansen in Denmark.

Barbie was invented in 1959.

The first PlayStation was released in 1994.

## Key Vocabulary

Victorian—The time of Queen Victoria's reign. 1837-1901

20th Century—The 20th Century was 1900-1999.

21st Century—We are in the 21st Century. It started in the year 2000 and will end in 2099.

Wooden toys—Lots of toys were made from wood. Boats, train sets and cup and ball were made from wood. Some toys are still made from wood.

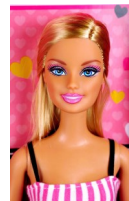
Paper toys—Some toys, like paper windmills were made out of paper.

Metal toys—Toy soldiers and some spinning tops were made out of metal.

Plastic toys—Most modern toys are made out of plastic. Toy soldiers, dolls and ride on cars are mainly made out of plastic.

### 19th Century

Toys: wooden dolls, wooden doll houses, tea sets, ball and cup, spinning tops, toy soldiers and leather footballs.



### 21st Century

Toys: handheld games consoles, online gaming, virtual reality gaming.



### 20th Century

Toys: teddy bears, Barbie dolls, Action Man, battery powered toys. The introduction of computer games and games consoles.

